



west midlands
police and crime
commissioner

**West Midlands Police and Crime
Commissioner**

and

West Midlands Police Chief Constable

Joint Statement of Corporate Governance



1st April 2014

Statement of Corporate Governance for the West Midlands Police and Crime Commissioner and West Midlands Chief Constable

Introduction

The purpose of this statement is to give clarity to the way the two corporations sole, police and crime commissioner and chief constable, will govern both jointly and separately, to do business in the right way, for the right reason at the right time.

Context

The principle statutory framework within which the corporations sole will operate is:

- Police Reform and Social Responsibility Act 2011,
- Policing Protocol Order 2011,
- Financial Management Code of Practice,
- Strategic Policing Requirement.

This framework creates a public sector relationship, based upon the commissioner provider arrangement but with unique elements such as the single elected commissioner and operational independence of the police service. It is therefore not appropriate to import corporate governance arrangements into this environment but to build upon existing good governance principles and experience.

Principles

The core principles to be adopted by both corporations sole will be those highlighted by the good governance standard for public services:

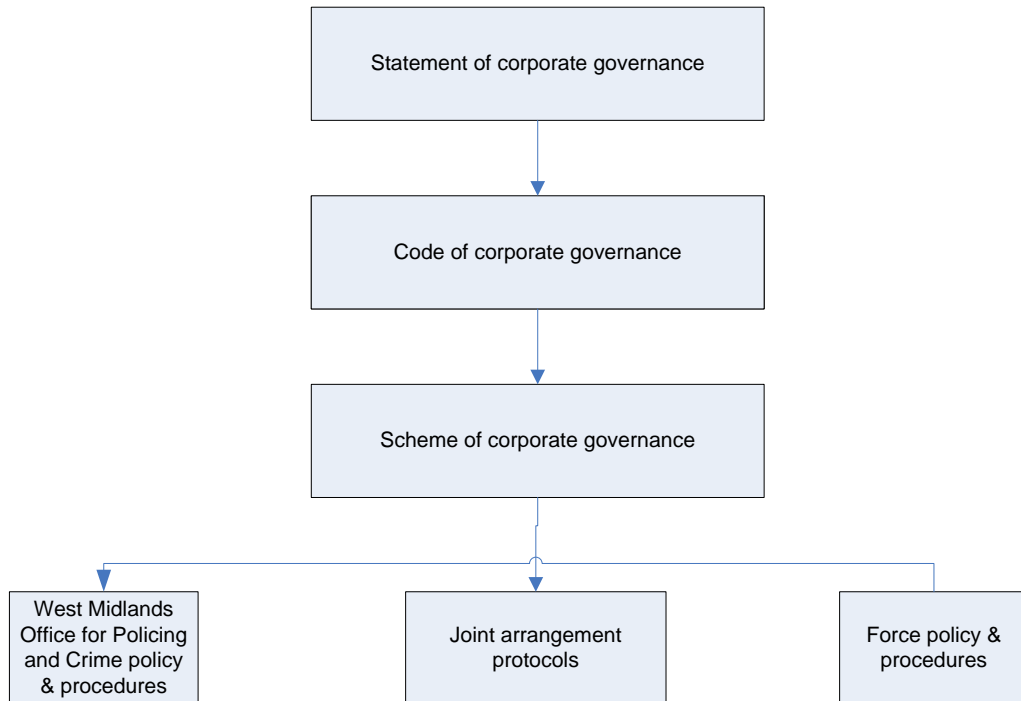
- Focus on outcomes for local people,
- Clarity of roles and functions,
- Promotion of values and demonstrating these through behaviour,
- Informed, transparent decisions & managing risk,
- Developing capacity and capability
- Engaging with local people to ensure robust accountability.

Framework / Instruments of governance

The corporate governance framework within which both corporations sole will govern, both jointly and separately will consist of:

- Statement of corporate governance – statutory framework and local policy,
- Code of corporate governance – sets out how the core principles will be implemented,

- Scheme of corporate governance – defines the parameters within which the corporations soles will conduct their business,
- Separate policy and procedures for each corporation sole, with protocols where they operate jointly.



Leadership

A corporate governance working group will review the framework on an annual basis and oversee its implementation. Membership will consist of senior staff representing both the Police and Crime Commissioner and the Chief Constable.